

Power Supplies For Instrumentation

The Model WE-111 is an industrial grade DC to DC converter designed for panel or 4" Snap Track mounting. Encapsulated electronics and conformal coating are standard features. Standard range is: 12 Vdc input; 24 Vdc at 600mA output.



TECHNICAL SPECIFICATIONS

INPUT VOLTAGE:

10.8 to 13.2 Vdc
12 Vdc nominal

OUTPUT:

24 Vdc @ 600 mA

ISOLATION:

Input/Output: 400 Vdc

ACCURACY:

Line regulation: $\pm .1\%$
Load regulation: $\pm .1\%$

OUTPUT RIPPLE:

50 mV rms (typical)

OPERATING TEMPERATURE RANGE:

-25°C to 71°C

ELECTRICAL CONNECTIONS:

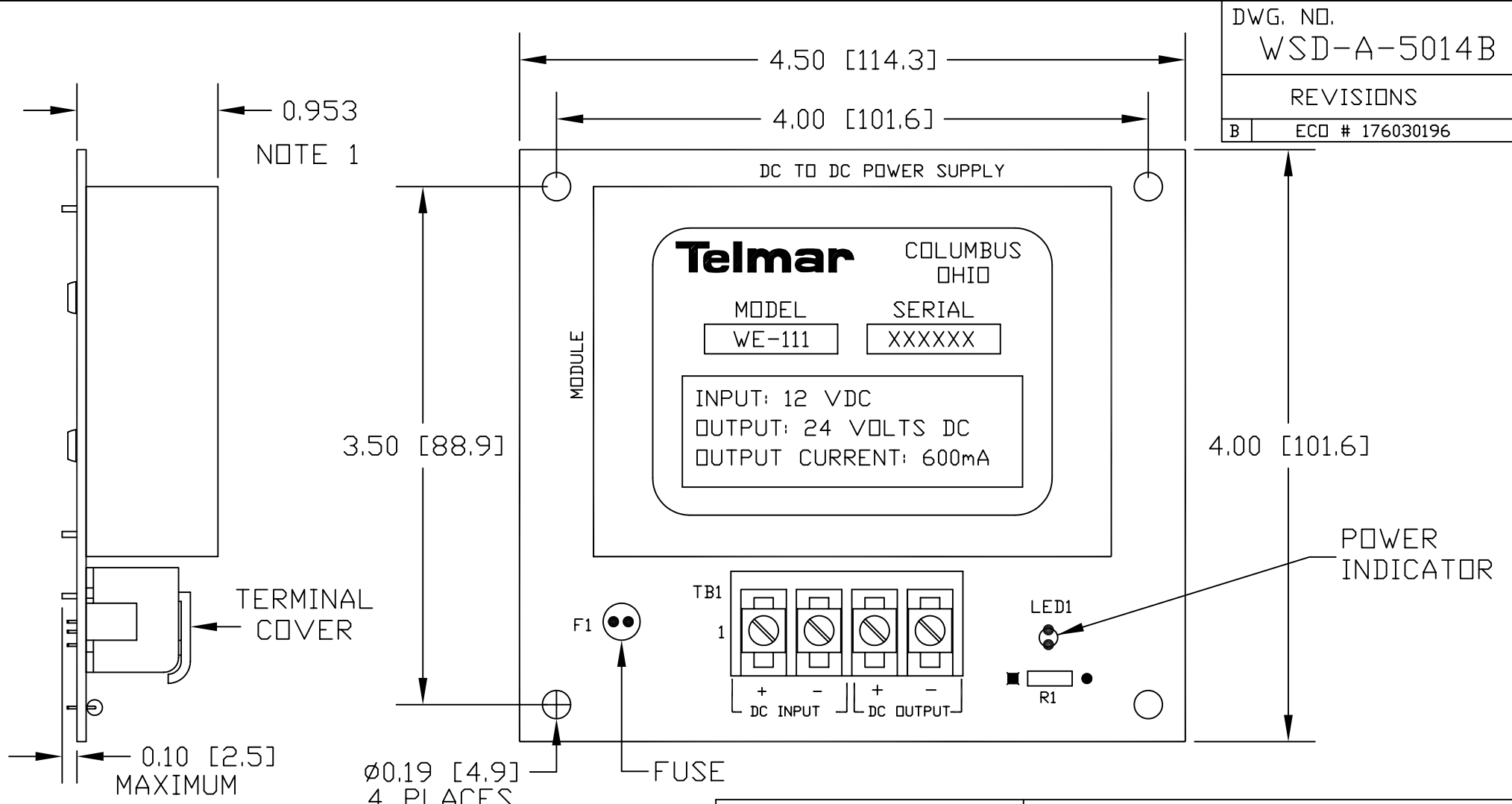
5 Position Terminal Block

FEATURES

- Green LED Output Indicator
- Fused Input
- 120 Hour Burn-In
- Conformal Coated
- 4" Snap Track Mountable
- Short Circuit Protected

OPTIONS

- Snap Track
- Variety of outputs available
contact the factory for specifics.



DWG. NO.	
WSD-A-5014B	
REVISIONS	
B	ECD # 176030196

- NOTES:
1. TYPICAL MAXIMUM DIMENSION FOR 12 VDC INPUT 24 VDC @ 600 mA OUTPUT.
 2. OTHER INPUTS & OUTPUTS ARE AVAILABLE, CONTACT FACTORY.
 3. DIMENSIONS IN BRACKETS ARE MILLIMETERS ALL OTHERS ARE INCHES.

QUOTE OR ORDER NUMBER		
Dimensions in inches unless otherwise specified		
DIMENSION TOLERANCES UNLESS OTHERWISE SPECIFIED		
BASIC DIMENSIONS	FRACTIONAL	DECIMAL
UP TO 6	+/- 1/64	+/- .005
OVER 6 TO 24	+/- 1/32	+/- .005
OVER 24	+/- 1/16	+/- .010
SCALE FULL	DO NOT SCALE DRAWING WORK TO DIMENSIONS	
DRAWN RML	DATE 04/01/96	
CHECKED SC	DATE 4/15/96	
APPROVED JDR	DATE 4/17/96	

Analynk Wireless, LLC	
790 CROSS POINTE ROAD COLUMBUS, OHIO 43230	
TITLE	DC TO DC CONVERTER MODEL WE-111
FOR	
NEXT ASS'Y	DWG NO. WSD-A-5014B

FILE NAME
EU000003.DWG