

Power Supplies for Instrumentation

The Model WE-104 is a general-purpose instrumentation power supply designed for panel, open-frame or 4" Snap Track mounting. The WE-104 has a 24 VDC at 100 mADC output. Fused circuitry, short circuit protection and green LED power indicator are standard.



TECHNICAL SPECIFICATIONS

INPUT VOLTAGE:

105 to 125 VAC @ 50/420 Hz

OUTPUT:

24 VDC @ 100 mA

ISOLATION:

50 MΩ Input Isolation

ACCURACY:

Line regulation: $\pm 0.1\%$

Load regulation: $\pm .1\%$

OUTPUT RIPPLE:

1.0 mV rms (typical)

OPERATING TEMPERATURE RANGE:

-25°C to 71°C

ELECTRICAL CONNECTIONS:

5 Position Terminal Block

FEATURES

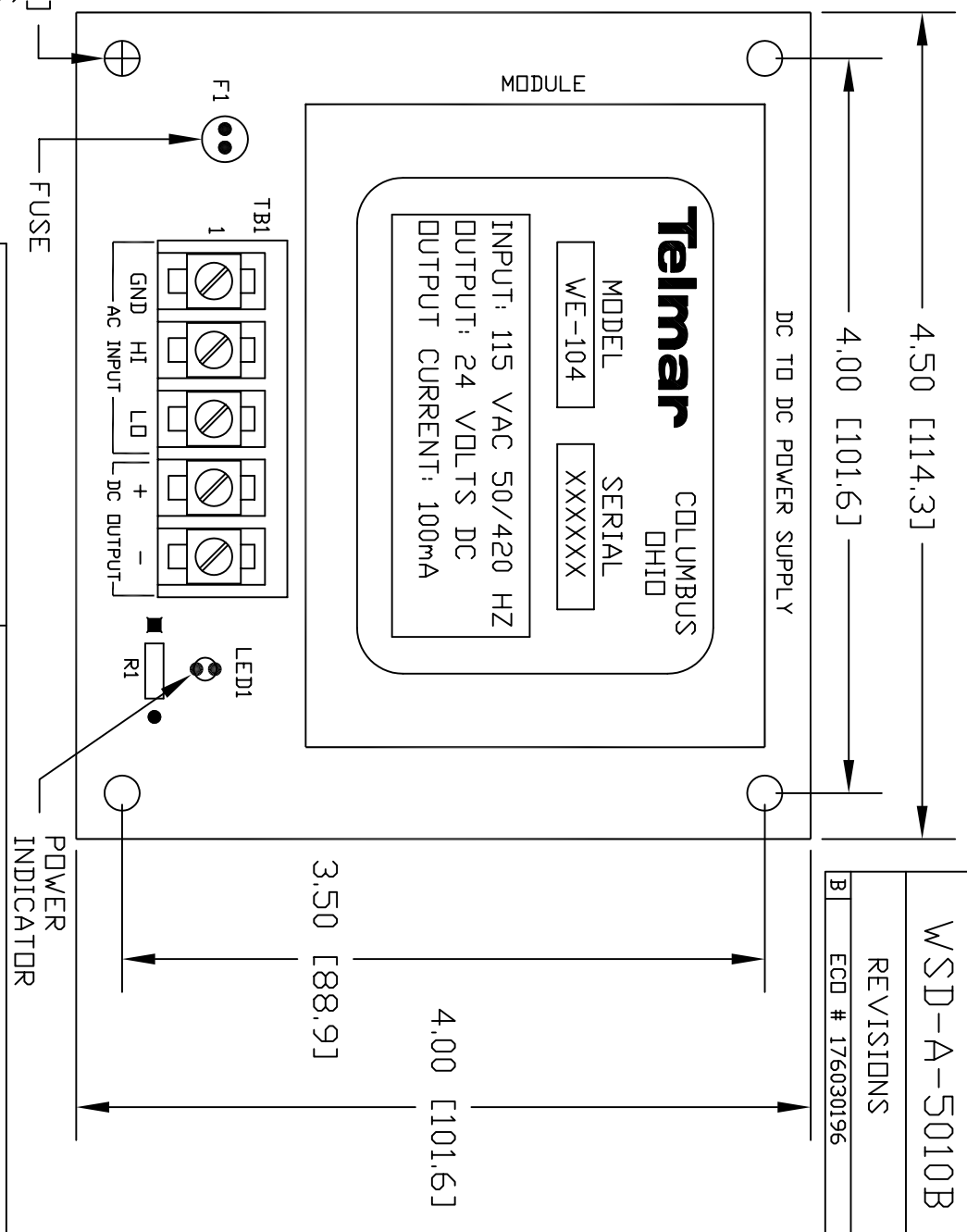
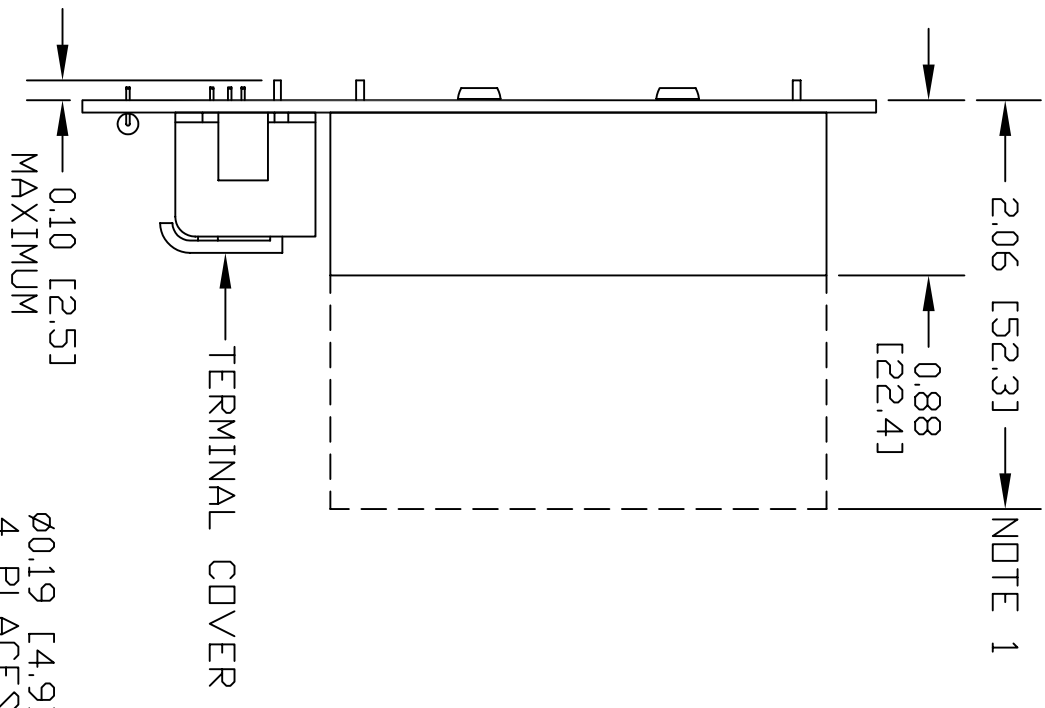
- Green LED Power Indicator
- Fused Input
- 120 Hour Burn-In
- Conformal Coated
- 4" Snap Track Mountable
- Short Circuit Protected

OPTIONS

- Snap Track
- Variety of outputs available.
Contact the factory for specifics.

REVISIONS	
B	ECD # 176030196

NOTE 1



NOTES:

- 0.88 IS THE MAXIMUM DIMENSION FOR A 24 VDC, 100 mA POWER SUPPLY. CASE SIZE MAY CHANGE WITH DIFFERENT OUTPUTS NOT TO EXCEED 2.06".
- OTHER INPUTS & OUTPUTS ARE AVAILABLE, CONTACT FACTORY.
- DIMENSIONS IN BRACKETS ARE MILLIMETERS ALL OTHERS ARE INCHES.

QUOTE OR ORDER NUMBER	
Dimensions in inches unless otherwise specified	
DIMENSION TOLERANCES UNLESS OTHERWISE SPECIFIED	
BASIC DIMENSIONS	DECIMAL
UP TO 6 OVER 6 TO 24 OVER 24	+/- 1/64 +/- 1/32 +/- 1/16
SCALE FULL	DO NOT SCALE DRAWING WORK TO DIMENSIONS
DRAWN RML	DATE 4/1/96
CHECKED SC	DATE 4/15/96
APPROVED JDR	DATE 4/17/96

TITLE		Analytik Wireless, LLC	
FOR		790 CROSS POINTE ROAD COLUMBUS, OHIO 43230	
DC POWER SUPPLY		MODEL WE-104	
NEXT ASS'Y	DWG NO.	WSD-A-5010B	

FILE NAME
EU000001.DWG