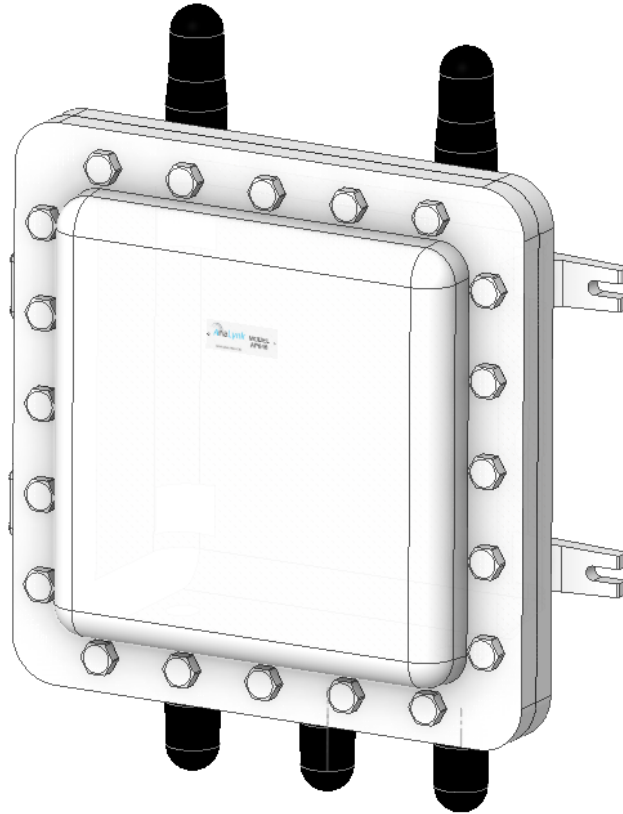


AP646 Explosion Proof Access Point Enclosure For Juniper Mist AP32E



SCANNING ANTENNA

The AP646 is a hazardous area enclosure designed to house the Juniper Mist AP32E dual band access point. The enclosure and antennas are rated for Class I, Div 1, groups C & D Hazardous Locations. All hardware, mounting plate, and RF cables are provided to make installation of the access point quick and easy. The enclosure includes five hazardous area 2.4GHz/5GHz antennas, the AP32E is not included.

Ratings:

Class I, Div 1 Groups, C & D
ATEX Zone 1 optional

Applications:

- Pharmaceuticals
- Oil refineries
- Oil & Gas Platforms
- Chemical Plants

Ordering information:

AP646
AP646-N4 (NEMA 4 rating)
AP646-SP1*
AP646-N4 -SP1(NEMA 4 rating)*

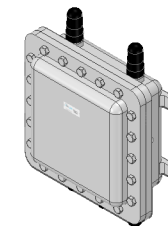
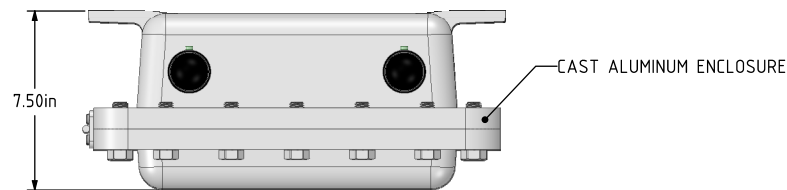
**DOES NOT INCLUDE SCANNING ANTENNA*

4

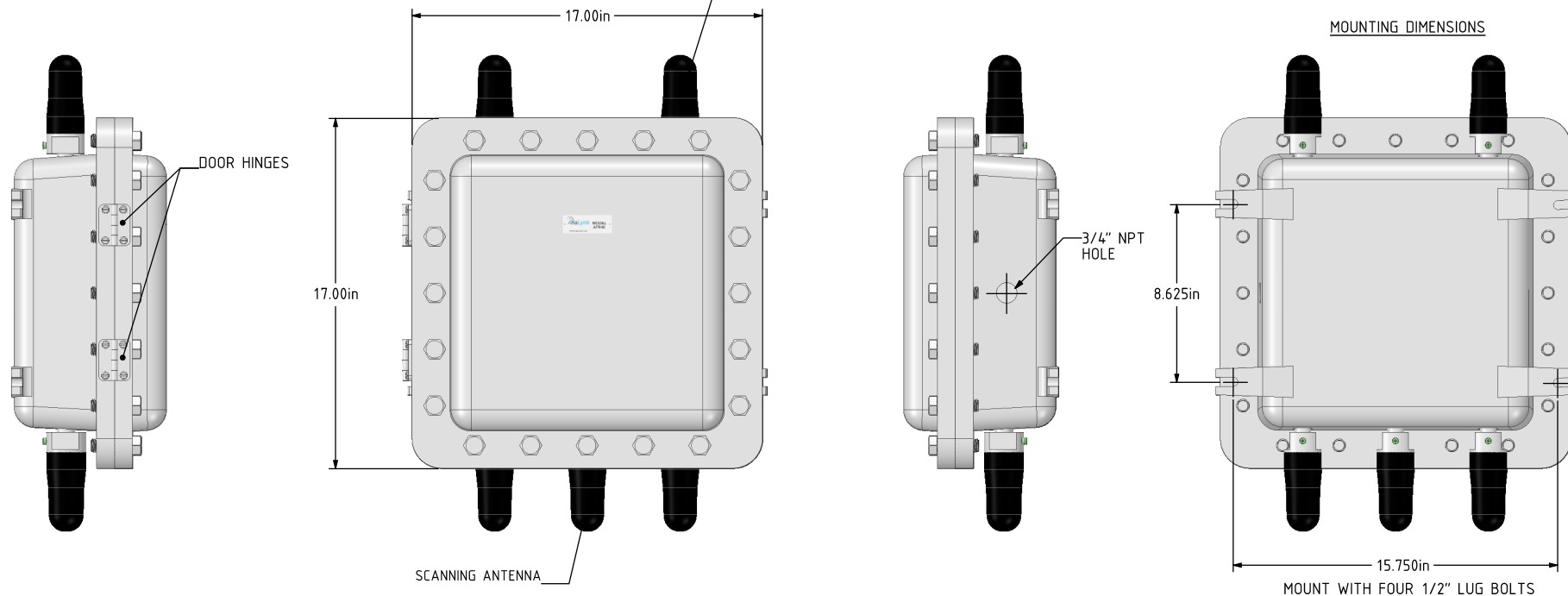
3

2

1



DUAL BAND 2.4GHz/5GHz
ANTENNAS, QTY 6



NOTES:

1. AP646 ACCESS POINT ENCLOSURE FOR JUNIPER MIST AP32E, RATINGS: CLS 1, DIV 1 GROUPS C & D.
2. ANTENNAS: CLS 1, DIV1 GROUPS C & D EXPLOSION PROOF 2.4GHz/5GHz, DUAL BAND QUANTITY FIVE.
3. APPROXIMATE WEIGHT: 76 LBS., MOUNT WITH FOUR 1/2" LUG BOLTS.
4. OPTIONS: NEMA 4 RATING P/N AP646-N4.
5. THE AP646 CAN BE ORDERED WITHOUT THE SCANNING ANTENNA. USE THESE PART NUMBERS WHEN PLACING YOUR ORDER (THE SCANNING ANTENNA HOLE WILL BE PLUGGED):

AP646-SP1

AP646-N4-SP1(INCLUDES NEMA 4X RATING)

6. DIMENSIONS IN INCHES.

790 CROSS POINTE ROAD, COLUMBUS, OHIO 43230, U.S.A.			
DESCRIPTION AP646 JUNIPER MIST AP32E HAZLOC ENCLOSURE			
SIZE C	CAGE CODE	DWG NO. SD-C-0434A	REV A
SCALE	www.analynk.com		SHEET