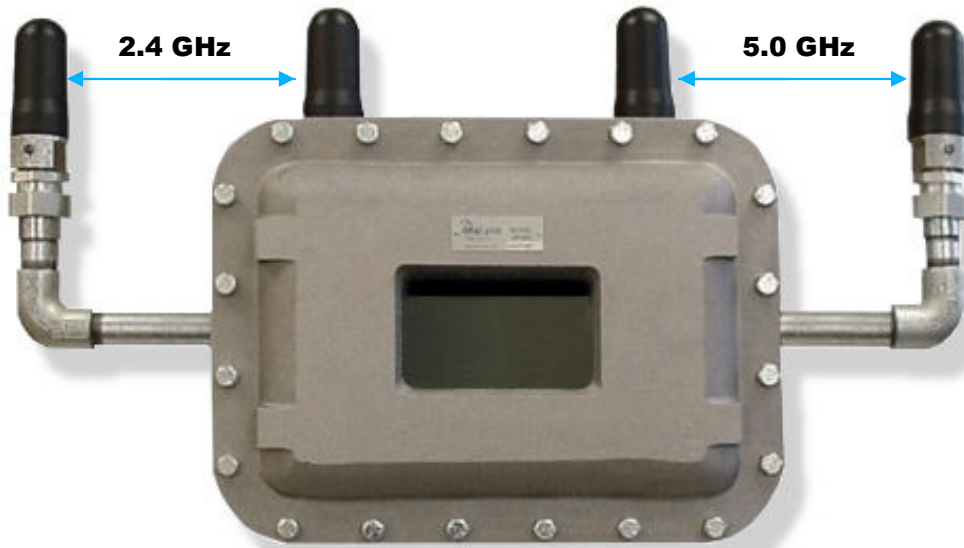




## AP300 DUAL-BAND ACCESS POINT



The AP300 is designed for Class 1, Div 1, groups C & D Hazardous Locations. All hardware, mounting plate, antennas and RF cables to make installation of access points (e.g. Symbol, Cisco) quick and easy are included. The enclosure utilizes our proprietary explosion proof CTX antennas. The AP300 includes two 2.4 GHz and two 5.0 GHz antennas (see model AP200 for two antenna design.) The enclosure is easily configurable for any manufacturer's access point or other wireless device and is available with or without a window.

### Ratings:

Class 1, Div 1 Groups, C & D  
-40°C to +85°C

### Applications:

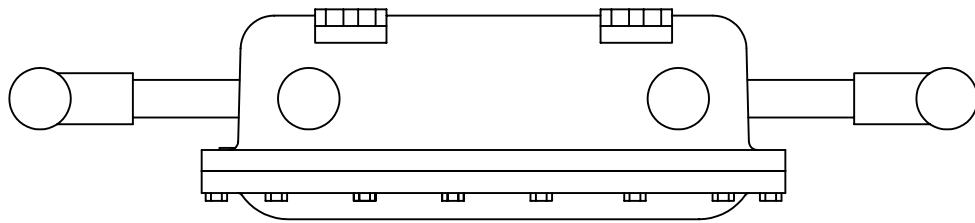
- Pharmaceuticals
- Oil refineries
- Oil & Gas Platforms
- Chemical Plants

### Ordering information:

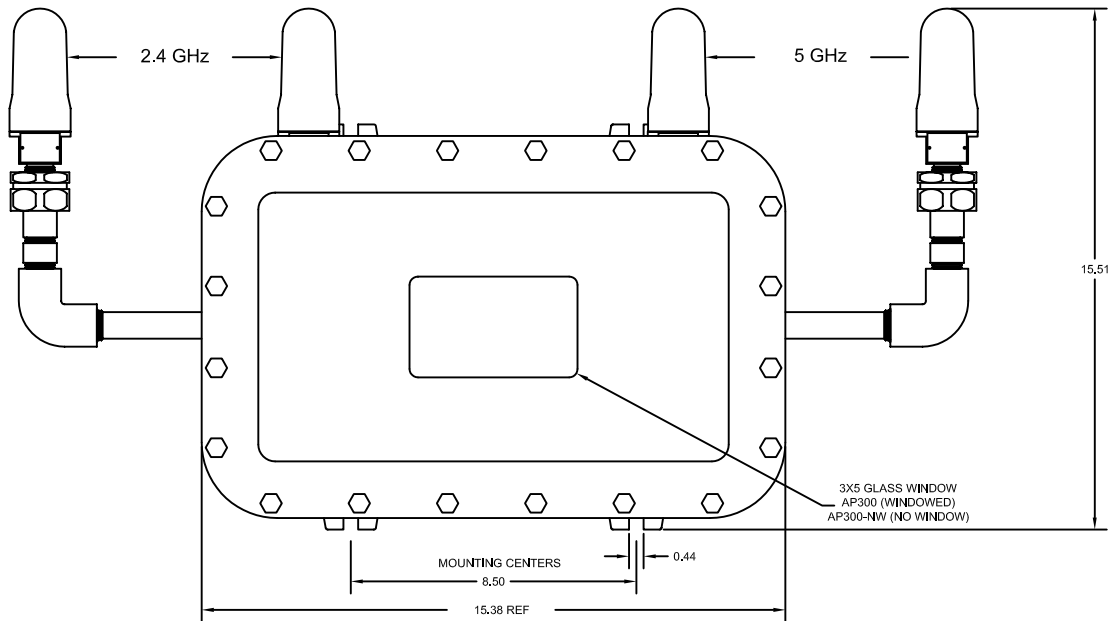
AP300 (with 3" x 5" window)  
AP300-NW (no window)

*Specify access point manufacturer when ordering.*

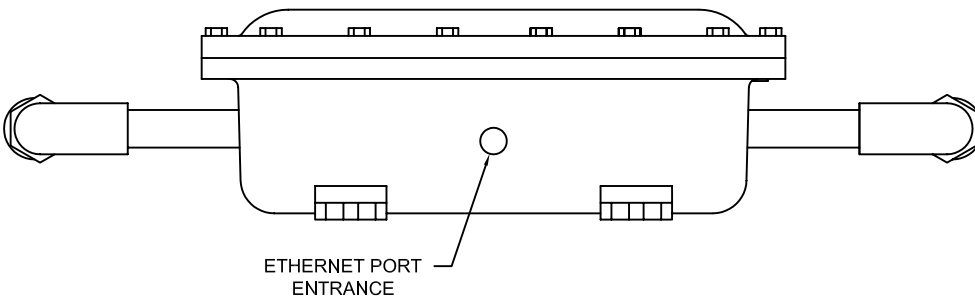
TOP VIEW



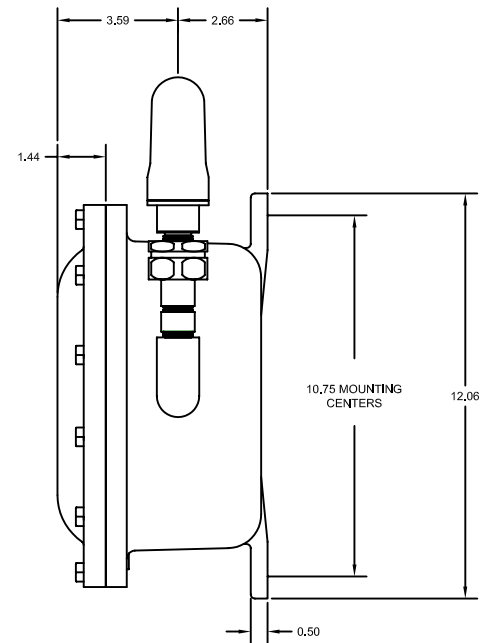
FRONT VIEW



BOTTOM VIEW



RIGHT SIDE VIEW



NOTES:

1. ENCLOSURE: CLS 1, DIV 1 EXPLOSION PROOF.
2. ACCESS POINT MOUNTING FOR: CISCO AIR-AP1232AG-A-K9 OR AIR-AP1242AG-A-K9, CUSTOM PLATES FOR OTHER MANUFACTURERS AVAILABLE.
3. ANTENNAS: CLS 1, DIV 1 EXPLOSION PROOF CTX-2400-TR, QTY 2, CTX-5000-TR, QTY 2.
4. ALL DIMENSIONS ARE IN INCHES.

QUOTE OR ORDER NUMBER		<b>Analynk Wireless, LLC</b> 790 CROSS POINTE ROAD COLUMBUS, OHIO 43230	
<small>           PREPARED BY: [blank]            CHECKED BY: [blank]            DATE: [blank]         </small>		<small>           DRAWN BY: [blank]            DATE: [blank]         </small>	
<small>           TITLE  <b>FOR ACCESS POINT</b>  <b>AP300 CLS1 DIV1</b> </small>		<small>           NEXT ASS'Y            DWG. NO.  <b>SD-D-0273A</b> </small>	
FILE NAME: EU000127.DWG	CHECKED DATE: APPROVED DATE:	DATE: DATE:	DATE: DATE: